

Tajikistan

| High MDR-TB burden |

Tuberculosis profile

Population 2013

8.2 million

Estimates of TB burden * 2013	Number (thousands)	Rate (per 100 000 population)
Mortality (excludes HIV+TB)	0.57 (0.43–0.73)	6.9 (5.2–8.9)
Mortality (HIV+TB only)	0.066 (0.044–0.092)	0.8 (0.54–1.1)
Prevalence (includes HIV+TB)	12 (5.7–20)	142 (70–239)
Incidence (includes HIV+TB)	8.2 (7.3–9.4)	100 (89–114)
Incidence (HIV+TB only)	0.26 (0.2–0.36)	3.2 (2.5–4.4)
Case detection, all forms (%)	68 (59–76)	

Estimates of MDR-TB burden * 2013	New	Retreatment
% of TB cases with MDR-TB	13 (9.8–16)	56 (52–60)
MDR-TB cases among notified pulmonary TB cases	480 (380–600)	670 (610–720)

TB case notifications 2013	New **	Relapse
Pulmonary, bacteriologically confirmed	2 205	270
Pulmonary, clinically diagnosed	1 647	
Extrapulmonary	1 454	

Total new and relapse	5 576
Previously treated, excluding relapses	919
Total cases notified	6 495

Among 5 306 new cases:

389 (7%) cases aged under 15 years; male:female ratio: 1.3

Reported cases of RR-/MDR-TB 2013	New	Retreatment	Total **
Cases tested for RR-/MDR-TB	2 205 (100%)	637 (54%)	2 842
Laboratory-confirmed RR-/MDR-TB cases			872
Patients started on MDR-TB treatment			625

TB/HIV 2013	Number	(%)
TB patients with known HIV status	5 200	(80)
HIV-positive TB patients	165	(3)
HIV-positive TB patients on co-trimoxazole preventive therapy (CPT)	117	(71)
HIV-positive TB patients on antiretroviral therapy (ART)	162	(98)
HIV-positive people screened for TB	1 944	
HIV-positive people provided with IPT	329	

Treatment success rate (%)	(%)
New and relapse cases registered in 2012	83
Previously treated cases, excluding relapse, registered in 2012	75
HIV-positive TB cases, all types, registered in 2012	57
RR-/MDR-TB cases started on second-line treatment in 2011	64
XDR-TB cases started on second-line treatment in 2011	

Laboratories 2013	
Smear (per 100 000 population)	1.1
Culture (per 5 million population)	2.4
Drug susceptibility testing (per 5 million population)	0.6
Sites performing Xpert MTB/RIF	11

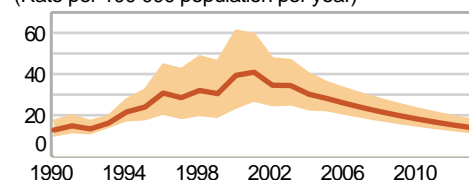
Is second-line drug susceptibility testing available? Yes, in and outside country

Financing TB control 2014	
National TB programme budget (US\$ millions)	41
% Funded domestically	12%
% Funded internationally	35%
% Unfunded	53%

* Ranges represent uncertainty intervals

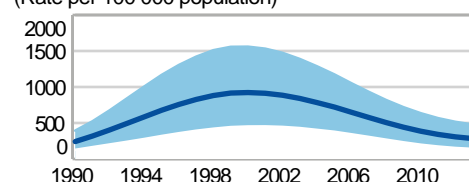
** Includes cases with unknown previous TB treatment history

(Rate per 100 000 population per year)



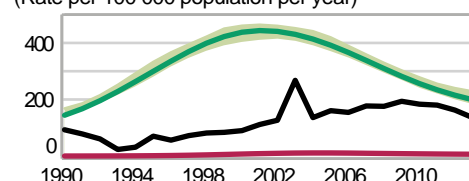
Mortality (excludes HIV+TB)

(Rate per 100 000 population)



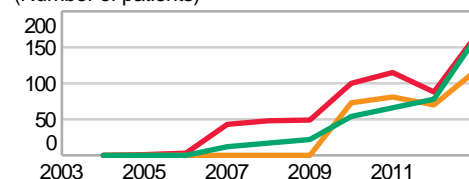
Prevalence

(Rate per 100 000 population per year)



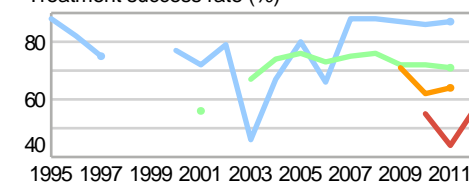
Notified (new and relapse) Incidence
Incidence (HIV+TB only)

(Number of patients)



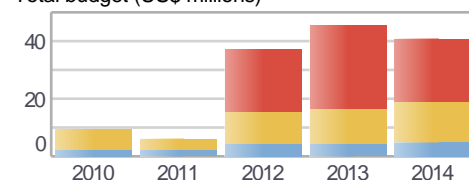
HIV-positive TB patients
on CPT on ART

Treatment success rate (%)



New Retreatment
New and relapse Retreatment, excluding relapse
HIV-positive RR-/MDR-TB XDR-TB

Total budget (US\$ millions)



Funded domestically Funded internationally
Unfunded

The number of HIV-are infected by age and gender on 30/06/2014

	1991-2005		2006		2007		2008		2009		2010		2011		2012		2013		2014		Total	
	M	F	M	F	M	F	M	F	M	F	M	F	M	F	M	F	M	F	M	F	M	F
0 - 4	1	0	2	1	2	6	4	1	2	8	8	3	37	20	78	31	50	32	18	11	201	113
5 - 14	2	0	1	0	3	0	1	0	1	1	2	2	7	7	18	6	29	19	21	21	86	56
15 - 18	7	2	1	0	0	1	0	1	0	0	1	1	2	2	2	0	2	2	0	0	15	9
19 - 29	152	47	45	27	75	31	72	33	60	52	162	83	134	118	77	109	87	119	54	87	917	707
30 - 39	200	20	83	16	152	35	145	36	180	39	413	90	331	106	209	93	190	127	127	102	2030	664
40 - 49	51	7	20	4	35	4	55	8	79	14	173	26	148	28	117	36	139	38	90	33	907	198
50 - 59	5	0	1	1	1	0	5	1	8	2	30	8	35	11	32	12	27	9	19	13	163	57
60 and older	0	1	0	0	0	1	1	0	1	0	1	1	3	0	6	2	6	0	3	3	21	8
Total	418	77	153	49	268	78	283	80	331	116	790	214	697	292	539	289	530	346	332	270	4340	1812
	495		202		346		363		447		1004		989		828		876		602		6152	

The number of HIV by sex and region from 1991 to June 30, 2014

Region	Total	Male	Female	Deaths	The total of dispenser registration	The indicator to 100 thousand population
Badakhshan	402	332	70	122	280	133,7
Dushanbe	1987	1493	494	179	1808	239,1
Sogd	1195	807	388	253	942	40,5
Khatlon	1441	975	466	324	1117	39,9
Regions of Republican Subordination	1127	733	394	210	917	50,7
Total	6152/ 6309	4340	1812	1088	5064	64,1

The HIV indicators per 100 thousand populations in the 2008-2014 years on regions of republic

№	Regions	Total in 2008-2009 years		Total in 2010 year		Total in 2011		Total in 2012		The total of 2013 year		Total in the 2014 year	
		Registered	To 100 thousand population	registered	To 100 thousand population	registered	To 100 thousand population	registered	To 100 thousand population	registered	To 100 thousand population	registered	To 100 thousand population
1	Badakhshan	56	27,0	46	22,3	64	26,0	53	29,9	65	31,0	35	16,7
2	Dushanbe	293	41,0	443	61,6	327	44,9	222	29,9	209	27,6	135	17,8
3	Sogd	144	6,5	186	8,1	138	6,3	145	6,0	151	6,5	133	5,7
4	Khatlon	196	7,3	187	6,9	262	9,6	196	7,2	248	8,8	155	5,5
5	Regions of Republican Subordination	121	7,5	142	8,2	198	11,2	212	12,1	203	11,2	144	8,0
	Total	810	10,8	1004	13,2	989	12,8	828	10,7	876	10,9	602	7,6

The transmission of HIV infection per 1991 June 30, 2014

Transmissions paths	Quantity	%	Male	%	Female	%
Sexual intercourse	2565	41,69%	1133	26,1%	1432	79,0%
By injecting	3052	49,61%	2889	66,6%	163	9,0%
Unknown	355	5,77%	217	5,0%	138	7,6%
From mother to child	180	2,93%	101	2,3%	79	4,4%
The total number of	6152	100%	4340	100%	1812	100%

HIV/TB Disease -831, died - 284
The Migrant of HIV - 369 (20 HIV / TB)