

# Bosnia and Herzegovina

## Tuberculosis profile

Population 2013

3.8 million

Estimates of TB burden * 2013	Number (thousands)	Rate (per 100 000 population)
Mortality (excludes HIV+TB)	0.19 (0.17–0.21)	4.9 (4.4–5.4)
Mortality (HIV+TB only)	0 (–)	0 (–)
Prevalence (includes HIV+TB)	1.3 (0.4–2.8)	35 (10–74)
Incidence (includes HIV+TB)	1.7 (1.3–2.3)	46 (33–60)
Incidence (HIV+TB only)		
Case detection, all forms (%)	72 (55–99)	

Estimates of MDR-TB burden * 2013	New	Retreatment
% of TB cases with MDR-TB	0 (0–0.57)	1.6 (0.04–8.5)
MDR-TB cases among notified pulmonary TB cases	0 (0–6)	2 (0–8)

TB case notifications 2013	New **	Relapse
Pulmonary, bacteriologically confirmed	643	63
Pulmonary, clinically diagnosed	352	36
Extrapulmonary	163	4

<b>Total new and relapse</b>	<b>1 261</b>
Previously treated, excluding relapses	0
<b>Total cases notified</b>	<b>1 261</b>

Among 1 261 new and relapse cases:

12 (<1%) cases aged under 15 years; male:female ratio: 1.2

Reported cases of RR-/MDR-TB 2013	New	Retreatment	Total **
Cases tested for RR-/MDR-TB	643 (100%)	63 (61%)	706
Laboratory-confirmed RR-/MDR-TB cases			1
Patients started on MDR-TB treatment			1

TB/HIV 2013	Number	(%)
TB patients with known HIV status	74	(6)
HIV-positive TB patients		
HIV-positive TB patients on co-trimoxazole preventive therapy (CPT)		
HIV-positive TB patients on antiretroviral therapy (ART)		
HIV-positive people screened for TB		
HIV-positive people provided with IPT		

Treatment success rate	(%)
New and relapse cases registered in 2012	84
Previously treated cases, excluding relapse, registered in 2012	77
HIV-positive TB cases, all types, registered in 2012	
RR-/MDR-TB cases started on second-line treatment in 2011	20
XDR-TB cases started on second-line treatment in 2011	

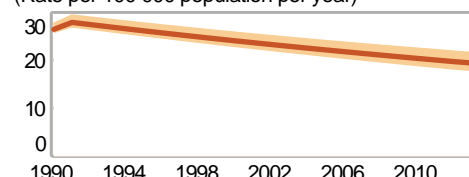
Laboratories 2013	
Smear (per 100 000 population)	0.4
Culture (per 5 million population)	17.0
Drug susceptibility testing (per 5 million population)	5.2
Sites performing Xpert MTB/RIF	0
Is second-line drug susceptibility testing available?	Yes, outside country

Financing TB control 2014	
National TB programme budget (US\$ millions)	5.3
% Funded domestically	72%
% Funded internationally	28%
% Unfunded	0%

\* Ranges represent uncertainty intervals

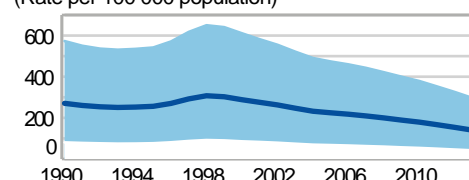
\*\* Includes cases with unknown previous TB treatment history

(Rate per 100 000 population per year)



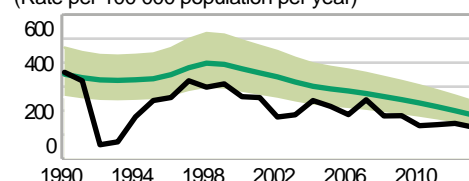
Mortality (excludes HIV+TB)

(Rate per 100 000 population)



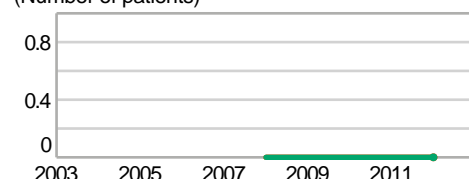
Prevalence

(Rate per 100 000 population per year)



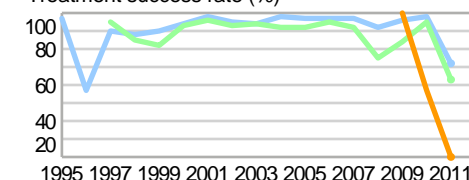
Notified (new and relapse) Incidence  
Incidence (HIV+TB only)

(Number of patients)



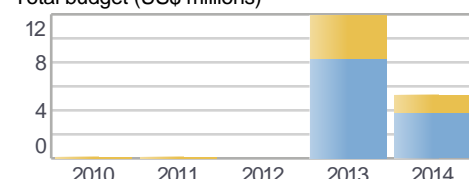
HIV-positive TB patients  
on CPT on ART

Treatment success rate (%)



New Retreatment  
New and relapse Retreatment, excluding relapse  
HIV-positive RR-/MDR-TB XDR-TB

Total budget (US\$ millions)



Funded domestically Funded internationally  
Unfunded